

AGENDA SUPPLEMENT (2)

Meeting: Salisbury Area Board

Place: Five Rivers Health & Wellbeing Centre, Hulse Road, Salisbury.SP1 3NR

Date: Thursday 6 February 2025

Time: 6.00 pm

The Agenda for the above meeting was published on 29 January 2025. Additional documents are now available and are attached to this Agenda Supplement.

Please direct any enquiries on this Agenda to Lisa Alexander of Democratic Services, County Hall, Bythesea Road, Trowbridge, direct line 01722 434560 or email lisa.alexander@wiltshire.gov.uk

Press enquiries to Communications on direct lines (01225)713114/713115.

This Agenda and all the documents referred to within it are available on the Council's website at www.wiltshire.gov.uk

5 **Information items:**

Updated briefing note – Wessex Devolution *(Pages 3 - 4)*

6 **Partner and Community Updates:**

Police Road Safety Data report *(Pages 5 - 14)*

DATE OF PUBLICATION: 5 February 2025

This page is intentionally left blank

Devolution to Wessex

Devolution is the handing down of powers and decision making from central government to councils. Government published a [White Paper](#) on how they wish to achieve Devolution in England on 16 December 2024.

The White Paper says that government will create in statute a new type of authority, a 'Strategic Authority'. Government wants universal coverage of Strategic Authorities and where progress is slow will have the power to mandate these. Strategic Authorities will bring together leaders of the constituent councils. The deepest powers and funding for Strategic Authorities will only be available to those where the Leaders of constituent councils are joined by a directly elected Mayor.

Funding will include long term investment, regeneration, transport and housing funds. Powers for strategic authorities will include:

- **Transport:** bus franchising; rail network influence; station control; key road network
- **Skills:** Adult Education Budget; Get Britain Working; Local Skills Improvement Plans;
- **Housing and Planning:** Spatial Development Strategies and when in place call-in powers on strategic developments plus a mayoral Community Infrastructure Levy; Homes England programmes and Affordable Housing Programme funding
- **Environment:** retrofit funding; Local Power Plans; Local Nature Recovery Strategies
- **Business:** Growth Hub Funding; Office for Investment; UKRI regional innovation influence
- **Public Service Reform:** aligning geographies (police and fire); mayors on Integrated Care Partnerships; health improvement; right to request devolution

Alongside the establishment of Strategic Authorities government will be moving to fully unitary councils across the country. Reorganisation will commence in remaining two tier areas (parts of the country which still have district councils).

When agreeing geographies for Strategic Authorities, Government will be considering:

- **Scale:** The default assumption is for a combined population of 1.5 million or above.
- **Economies:** sensible economic geographies
- **Contiguity:** Any proposed geography must be contiguous across its constituent councils
- **No 'devolution islands':** Geographies must not create devolution 'islands' by leaving areas which are too small to go it alone or which do not have natural partners.
- **Delivery:** Geographies should ensure the effective delivery of key functions including Spatial Development Strategies, Local Transport Plans and Get Britain Working Plans.
- **Alignment:** The government will seek to promote alignment between devolution boundaries and other public sector boundaries.
- **Identity:** A vital element of successful devolution is the ability for local residents to engage with and hold their devolved institutions to account – and local identity plays a key role in this

Applications to a Devolution Priority Programme were sought by government by 10 January. Wiltshire Council sought inclusion in this programme along with other councils in the Wessex area – BCP (Bournemouth, Christchurch and Poole), Dorset and Somerset – representing a combined population of 1.9 million. An extraordinary [full council](#) was held on 9 January where Wiltshire councillors voted 65-7 to join the programme, whilst noting some reservations alongside the clear direction of travel from government. The paper sets out the background to the debate.

On 5 February, government announced the areas that would proceed as part of the Devolution Priority Programme. Wessex was not amongst them and now the individual councils will be working with central government to consider the next steps to ensure the area does not miss out on the proposed benefits.

A statement from the Leaders of the four councils is available online:

[Wessex not accepted into Devolution Priority Programme - Wiltshire Council](#)

FAQs

Why did the councils support an elected mayor for Wessex?

The government has made it clear that it is committed to devolution that includes mayors and that there will be a significant premium in terms of funding and representation associated with this. This model aims to ensure clear, accountable leadership to drive economic growth, improve public services, and invest in vital infrastructure, working closely with the leaders of the constituent councils.

Mayoral devolution offers the opportunity to develop a long-term investment plan for the critical infrastructure our counties need with the ability to bring in additional private sector investment. Should mayoral devolution be agreed, residents would have the opportunity to vote for a mayor.

What about Swindon?

Discussions to date included Swindon Borough Council but they are currently exploring a range of options. Wiltshire, Somerset, BCP and Dorset councils remain open to the possibility of working with Swindon as part of Wessex.

How would the Wessex proposal work in practice? What type of authority would actually be created if devolution is agreed for Wiltshire?

We expect the governance framework for mayoral strategic authorities to be based on the mayoral combined authority structures provided for in existing legislation. In almost all circumstances decisions will be taken by council leaders and 'majority voting, including the mayor'. A mayor would chair meetings of the Strategic Authority. Scrutiny arrangements will be in place alongside audit and local public accounts committees.

Will Wiltshire Council be merging with BCP, Dorset and Somerset if the Wessex devolution proposal is agreed?

No. There are no plans to share additional services between the three councils. The aim of devolution is to unlock additional funding streams from central government and that we would work collaboratively with BCP, Somerset and Dorset on new initiatives.

If the devolution proposal is approved by government, local councils in Wiltshire, BCP, Dorset and Somerset will continue to exist and have the same responsibilities as they do now. Current legal, tax-raising and public service responsibilities of individual councils will remain with those councils. Any formal proposals will be subject to consultation.

What will happen next?

The areas selected for participation under the Devolution Priority Programme will hold mayoral elections in May 2026. The rest of the country that does not already have mayoral authorities is waiting to hear the next steps from central government. The government will be bringing forward the English Devolution Bill to ensure strategic authorities are introduced across the country.

WILTSHIRE POLICE

Page 5



Road Safety update – Salisbury Area Board

4th February 2025

Keeping Wiltshire Safe



www.wiltshire.police.uk | [Facebook/wiltshirepolice](https://www.facebook.com/wiltshirepolice) | [Twitter @wiltshirepolice](https://twitter.com/wiltshirepolice) | [LinkedIn/company/wiltshirepolice](https://www.linkedin.com/company/wiltshirepolice)

Agenda Item 6

• #FATAL5 education



Not wearing a seat belt

It is a legal requirement in the United Kingdom to wear a seat belt if one is fitted, there are only a [few exemptions](#).

In 2017, 27% - over a quarter - of those who died in cars on the road were not wearing seat belts.

#KEEPINGWILTSHIRESAFE

#FATAL5

You can be fined up to £500 for not wearing a seat belt.

Wearing a seat belt not only helps protect your safety, it helps protect the safety of others.

Only one person is allowed in each seat fitted with a seat belt. Never use the same seat belt across two or more passengers.

As a passenger over the age of 14 it's your responsibility to ensure you're wearing a seat belt. Failure to do so could result in a fine.

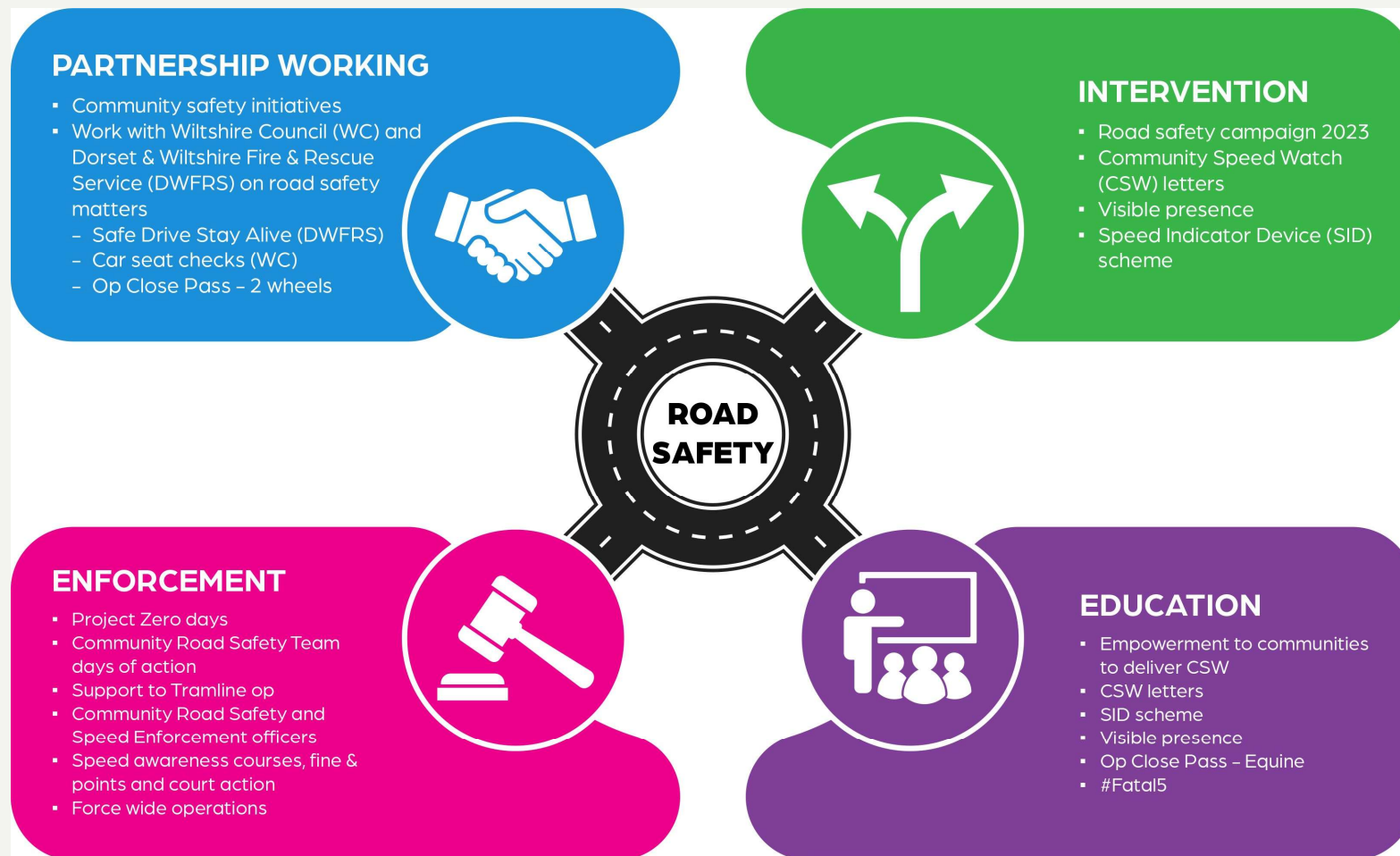
Child passengers

Children under 135 cm (4'4") tall must be in the correct car seat for their height and weight. You can be fined £500 if a child under 14 years old isn't in the correct car seat, or, if over 135cm tall, wearing a seatbelt whilst you are driving.

Find out car seat requirements and further information by visiting [child car seats: the law](#).



• Community Road Safety Team; what we do



• Traffic surveys – Salisbury

January 2024 – February 2025

Wiltshire Council

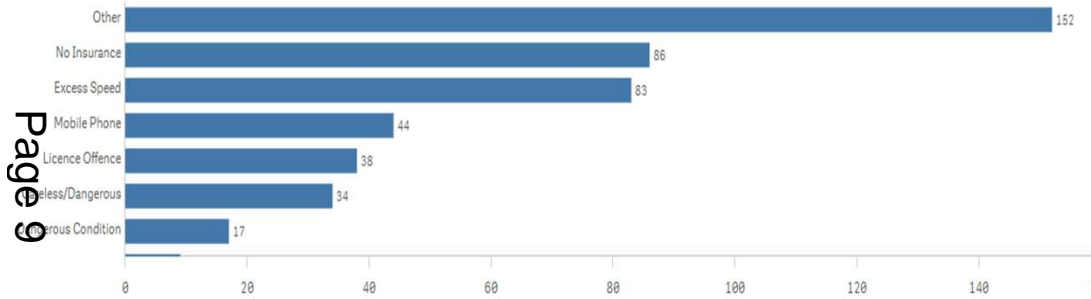
Title	Result	Survey start date	Speed limit	85th percent	CPT
Alderbury-Clarendon Road	Speed education	15/04/2024	30	36.9	Salisbury
Chilmark - Fovant Road	No further action	29/01/2024	60	24.7	Salisbury
Chilmark - Tisbury Road	No further action	29/01/2024	60	34.1	Salisbury
Osborne Bissett-A354 Salisbury Road	No further action	15/04/2024	40	45.2	Salisbury
East Grimstead-Long Drove	No further action	15/04/2024	30	25.5	Salisbury
Ford - Roman Road	Speed education	29/01/2024	30	36.6	Salisbury
Laverstock - Hill Road	No further action	15/04/2024	20	19.2	Salisbury
Salisbury - Lower Street	No further action	15/04/2024	30	20.9	Salisbury
Whaddon-Southampton Road	No further action	15/04/2024	30	33.1	Salisbury

• Wider work recently

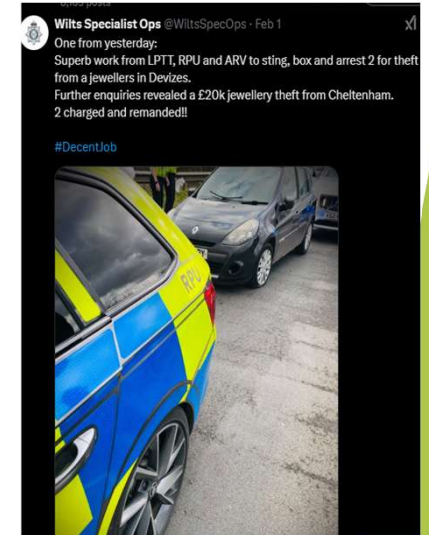
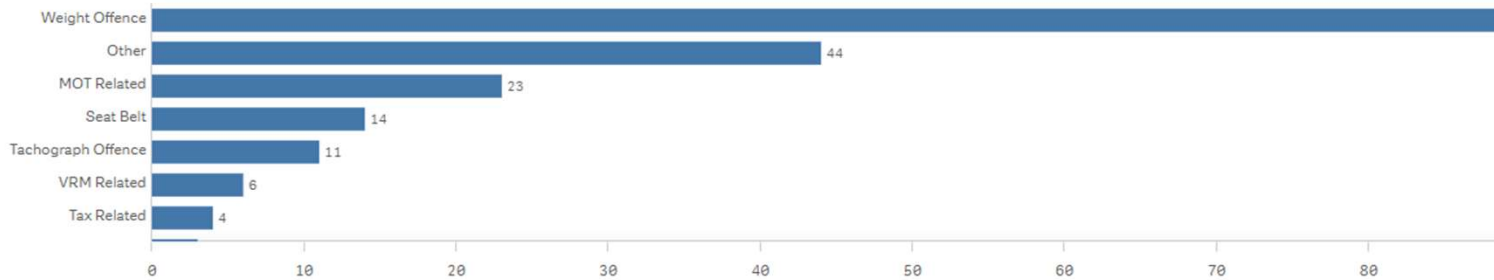
Our Roads Policing Unit (RPU) in the last quarter, covering **November to February** issued over **793 tickets** to motorists, for numerous road related offences.

The most common offences they are coming across are as follows:

Activity - Endorsable offences



Activity - Non-Endorsable Offences



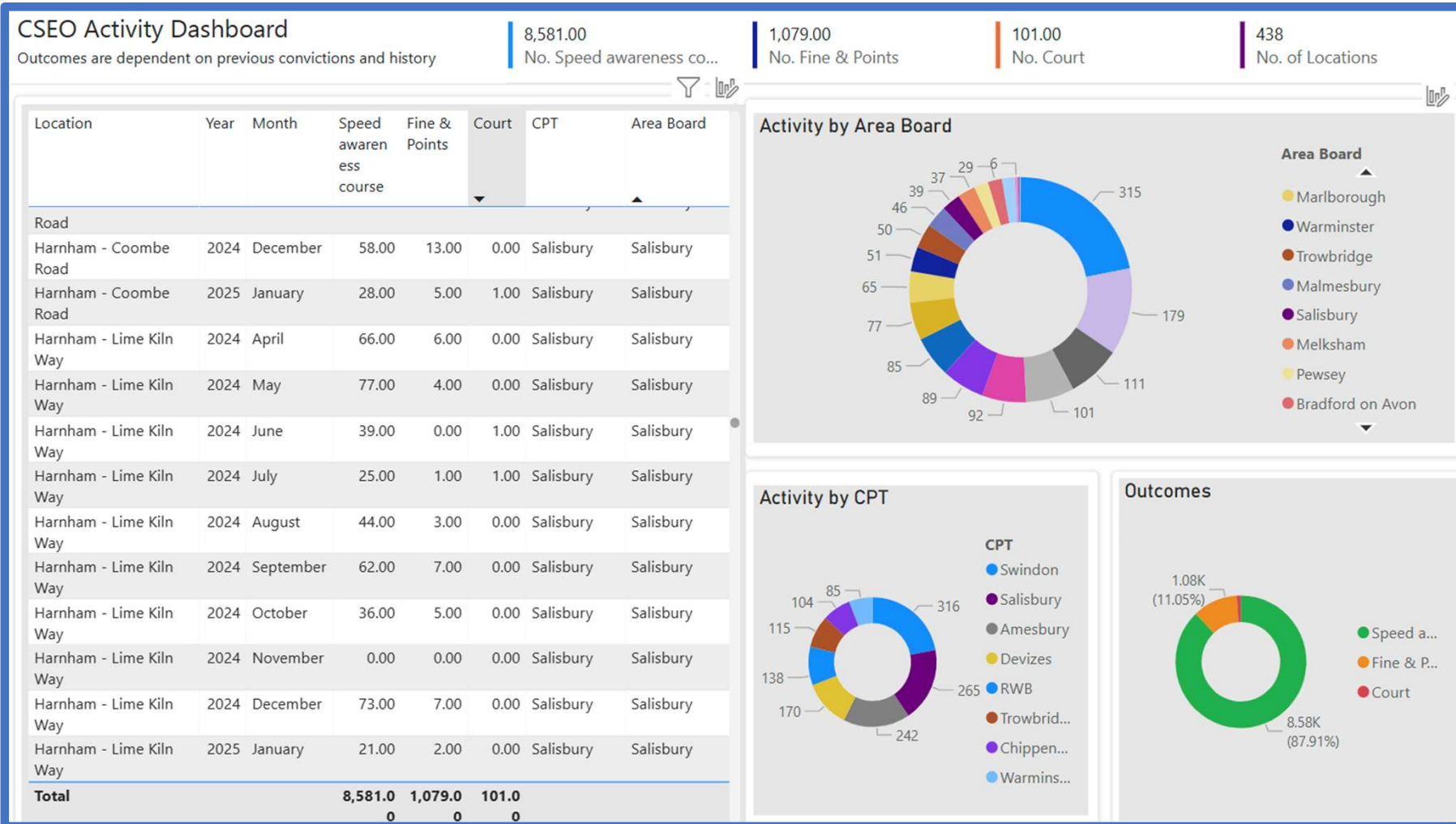
Community Speed Enforcement Officers

CSEO's



• CSEO – Dashboard – 1st April 2024 to 4th February 2025

Page 11



• CSEO – Salisbury Area Board – 1st April 2024 to 4th February 2025

CSEO Activity Dashboard

Outcomes are dependent on previous convictions and history

8,581.00
No. Speed awareness co...

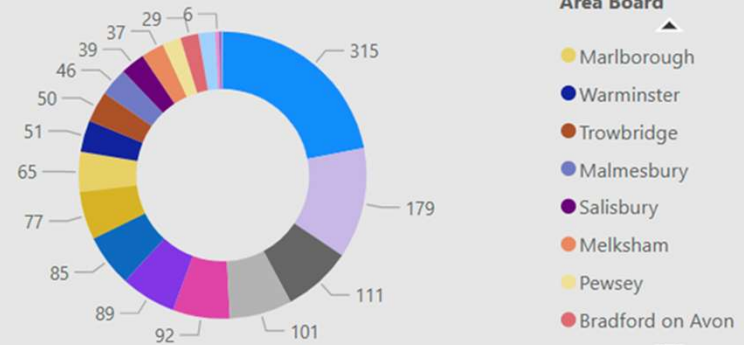
1,079.00
No. Fine & Points

101.00
No. Court

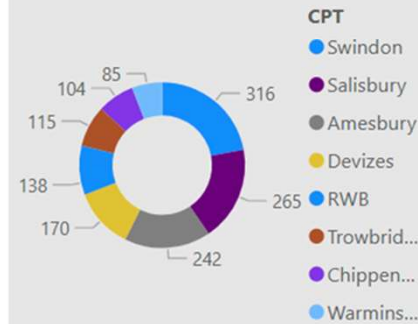
438
No. of Locations

Location	Year	Month	Speed awareness course	Fine & Points	Court	CPT	Area Board
Bemerton - RA only	2024	December	0.00	0.00	0.00	Salisbury	Salisbury
Harnham - Coombe Road	2024	October	23.00	0.00	0.00	Salisbury	Salisbury
Harnham - Coombe Road	2024	November	70.00	12.00	1.00	Salisbury	Salisbury
Harnham - Coombe Road	2024	December	58.00	13.00	0.00	Salisbury	Salisbury
Harnham - Coombe Road	2025	January	28.00	5.00	1.00	Salisbury	Salisbury
Harnham - Lime Kiln Way	2024	April	66.00	6.00	0.00	Salisbury	Salisbury
Harnham - Lime Kiln Way	2024	May	77.00	4.00	0.00	Salisbury	Salisbury
Harnham - Lime Kiln Way	2024	June	39.00	0.00	1.00	Salisbury	Salisbury
Harnham - Lime Kiln Way	2024	July	25.00	1.00	1.00	Salisbury	Salisbury
Harnham - Lime Kiln Way	2024	August	44.00	3.00	0.00	Salisbury	Salisbury
Harnham - Lime Kiln Way	2024	September	62.00	7.00	0.00	Salisbury	Salisbury
Harnham - Lime Kiln Way	2024	October	36.00	5.00	0.00	Salisbury	Salisbury
Harnham - Lime Kiln Way	2024	November	0.00	0.00	0.00	Salisbury	Salisbury
Harnham - Lime Kiln Way	2024	December	73.00	7.00	0.00	Salisbury	Salisbury
Total			626.00	65.00	4.00		

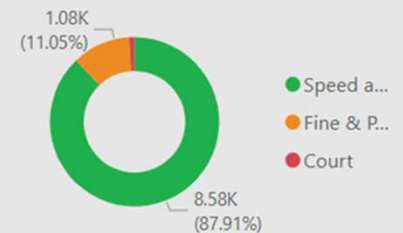
Activity by Area Board



Activity by CPT



Outcomes



• Your Force | Your Area | Follow us

For information on Road Safety in Wiltshire visit:

[Road safety campaign | Wiltshire Police](#)

[Road Safety \(wiltshire-pcc.gov.uk\)](http://wiltshire-pcc.gov.uk)



Page 13

[Salisbury City Centre | Your Area | Wiltshire Police | Wiltshire Police](#)



[Salisbury Police | Facebook](#)

[Wilts Specialist Ops \(@WiltsSpecOps\) / X \(twitter.com\)](#)

[Wiltshire Specials \(@wiltspolicesc\) / Twitter](#)



This page is intentionally left blank